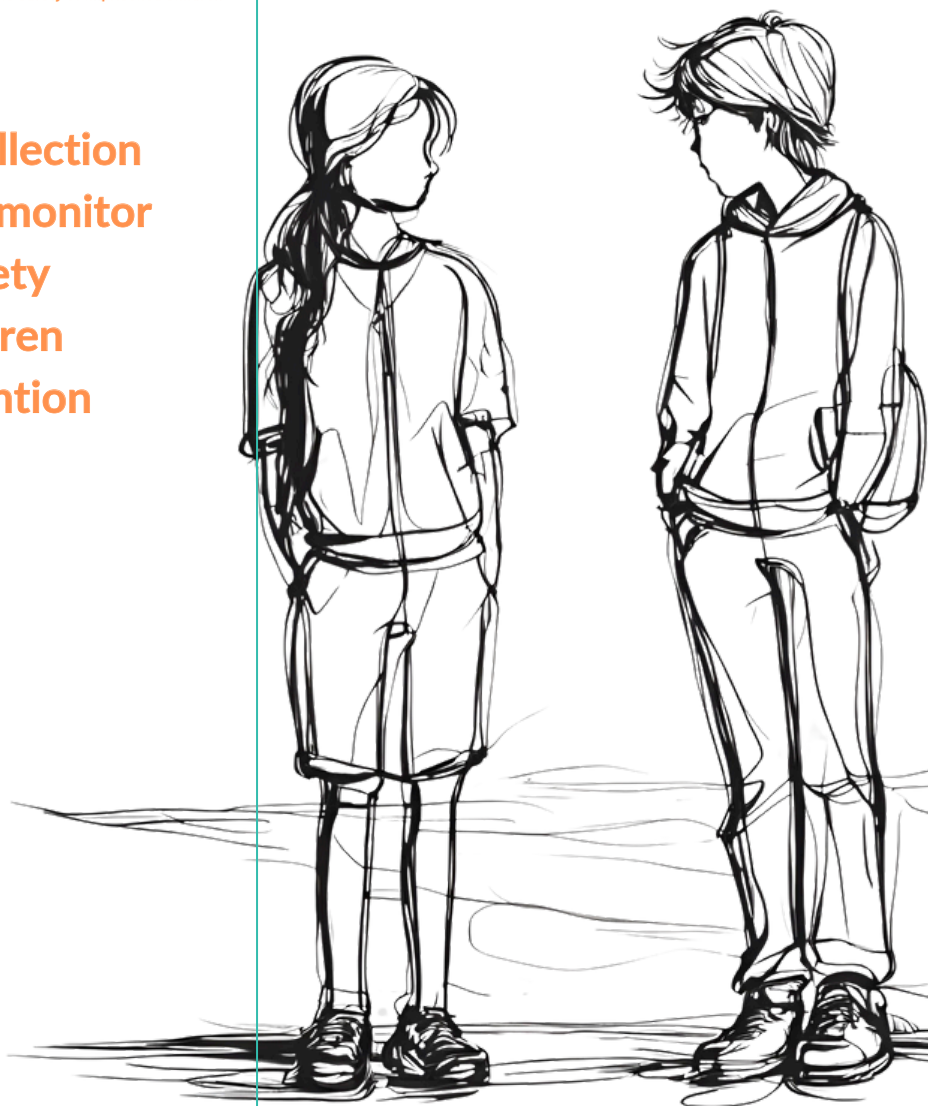




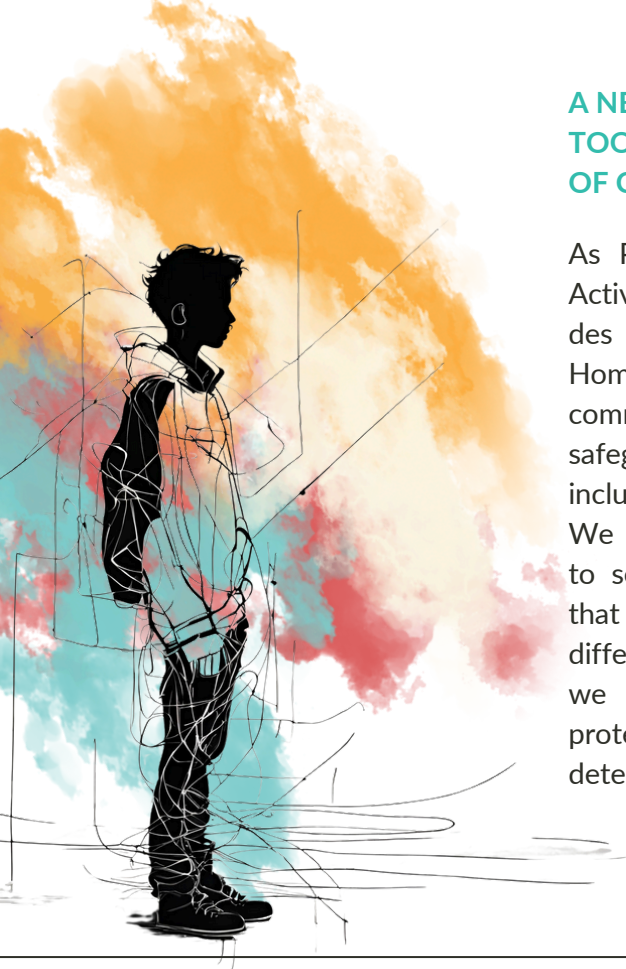
Scan for more information
and to download the Data
MOSAIC Tool and the Guide
in EN, FR, BG, RO

**A new
data collection
tool to monitor
the safety
of children
in detention**



**Funded by
the European Union**





A NEW DATA COLLECTION TOOL TO MONITOR SAFETY OF CHILDREN IN DETENTION

As Penal Reform International, Social Activities and Practices Institute, Terres des Hommes Romania and Terres des Hommes Spain, we are strongly committed to support the better safeguarding of children in all contexts, including the detention setting.

We developed the Data MOSAIC Tool to serve this purpose with the vision that it will have a broader application in different states and regions. However, we emphasise that the best way to protect children is by preventing their detention in the first place.

WHAT IS THE DATA MOSAIC TOOL?

The **Data MOSAIC Tool** is a data collection tool designed specifically for monitoring all forms of violence against children (VAC) incidents in child detention facilities – that includes a focus on marginalised groups.

Through real-time **data entry and analysis**, this Tool aims to enable facilities to identify trends, pinpoint areas or times of heightened risk, or determine whether marginalised groups are disproportionately affected. The Tool also helps to spot recurring causes of violence, guiding more informed and effective responses by maintaining a child safeguarding approach to all children involved in the incident.



The tool is composed of:

- **A monitoring dashboard** that visualises the VAC trends across the facility,
- **Three questionnaires** that capture:
 - specific information about the incident,
 - background information of those involved, and
 - the impact of the incident and responses taken.
- **Databases and other sheets** linked with the rest of the tool.

How does the Tool support change?

- ➡ **Evidence-based responses:** The Data MOSAIC Tool supports detention facilities in developing practical and evidence-based measures to prevent and better respond to VAC. The Tool's dashboard analyses incidents, offering a comprehensive view of VAC trends and customisable insights to identify causes, helping management take targeted actions like improving CCTV coverage or staff allocation.
- ➡ **Build comparable data:** It promotes standardised and comparable data collection across different regions, helping to inform broader policy efforts by the European Union, Council of Europe and the United Nations in addressing VAC within detention settings.

INCIDENT OCCURS

A child at the facility experiences violence—such as bullying based on ethnicity, physical discipline by a staff member, or a fight between children.

REPORTING BEGINS

Once the staff is informed about the incident by someone involved or witnessed the incident, they complete **three sheets of questionnaire, which takes approximately 5-10 minutes depending on the complexity of the incident.** The staff can also report incidents they have witnessed themselves. **The reporting staff is advised to listen and include the views of children involved while reporting.**

ENTER PEOPLE INVOLVED

The reporting staff identify those involved and activate columns to input data. The tool supports multiple entries (up to 5 people per incident at the current version) enabling reporting staff to enter data unique to each person involved, either a child, a facility staff, a family member or others involved, and monitor their role more accurately.

DATA ENTRY

The reporting staff then provides detailed information about the incident, including the **time, location, individuals involved, the nature of the incident, its cause,** and any other relevant details. Some questions include follow-up prompts for more specific information. For instance, if the incident stems from an institutional practice, the reporting staff is prompted to specify the type of practice. The **Guide** is available for staff to consult if they need assistance while answering any of the questions.

BACKGROUND INFORMATION

By clicking the button at the end of the page, the reporting staff proceeds to the second sheet, which focuses on gathering demographic and background information about the children involved in the incident.





DATA PRIVACY AND ACCURACY

Ideally, this sheet is **integrated with existing records** of the children in the facility, allowing relevant information to be automatically retrieved. However, if the facility does not have an electronic file management system, the reporting staff manually enters the necessary information by reviewing existing files and consulting with children when needed. It is crucial to respect the **privacy rights of children**, including their right to withhold information, and to comply with **international and national data protection laws**.

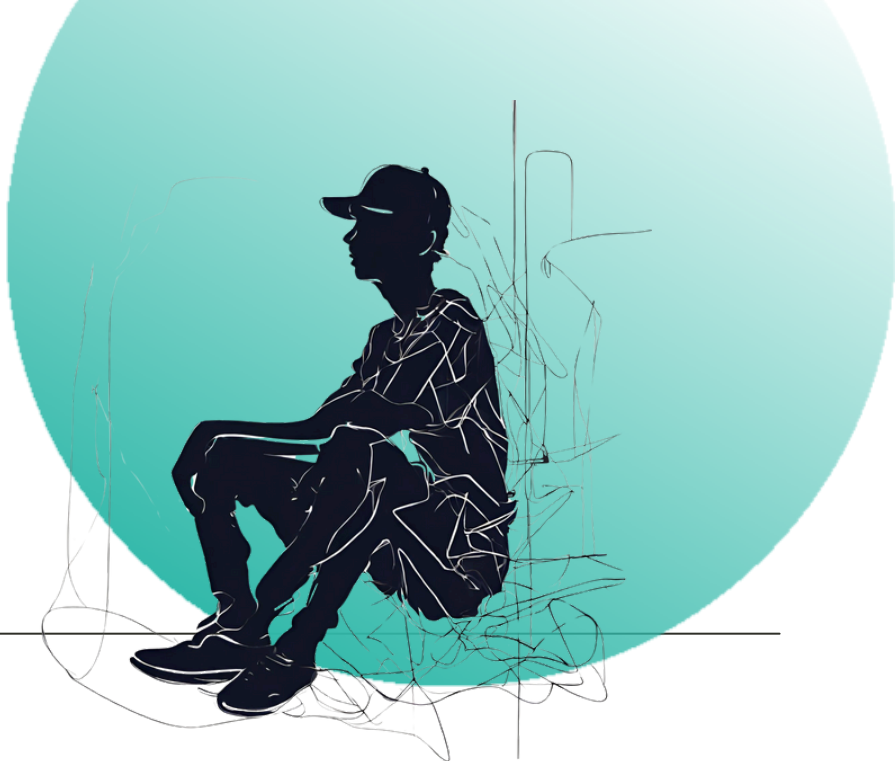
The data collected on the children's family and personal background is analysed to monitor whether certain groups, particularly those from marginalised communities, are being disproportionately targeted. As outlined in the Guide, this data is intended to better protect vulnerable groups without stigmatising any group as "usual suspects." A child safeguarding approach should be applied to all children involved, and the insights gained from this data should be used to inform practical and policy measures that ensure the protection of all children in a non-discriminatory manner.

MONITORING IMPACT

The third questionnaire focuses on assessing the outcomes of the incident and how the needs of the children involved were addressed. It also tracks the actions taken regarding the staff involved. The data collected here encourages facilities to reflect on the practical steps taken, including the physical and emotional support provided to the children, and to identify areas for improvement.

FINAL SUBMISSION

Once the reporting staff submits the entry, the incident is stored in the database, where it is assigned a unique incident number for tracking. This step marks the final stage of the reporting process.



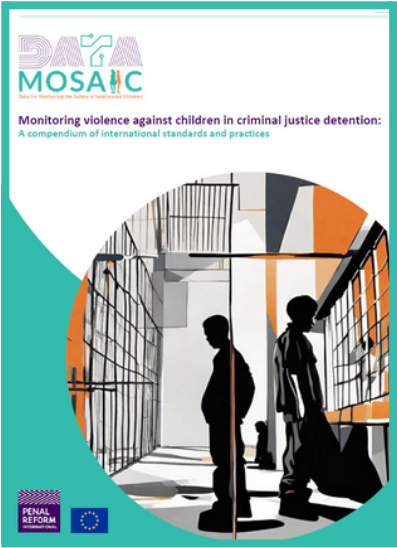
DASHBOARD ANALYSIS

All incidents entered into the Tool are **analysed** and presented in the **monitoring dashboard**, which provides an overview of VAC incidents and emerging trends. Using built-in functionality, the dashboard gives management an overall picture, helping them to take **practical and policy-level actions** based on the data. The analysis can also be customised to fit the specific needs of the facility, making it easier to identify underlying causes of violence. For example, the dashboard might reveal that a particular location within the facility is more prone to VAC incidents. This insight allows management to investigate potential causes, such as insufficient **CCTV coverage** or a **low staff presence** in that area.



OTHER RESOURCES DEVELOPED IN RELATION TO DATA MOSAIC

Monitoring violence against children
in criminal justice detention:
A compendium of international
standards and practices



SCAN ME

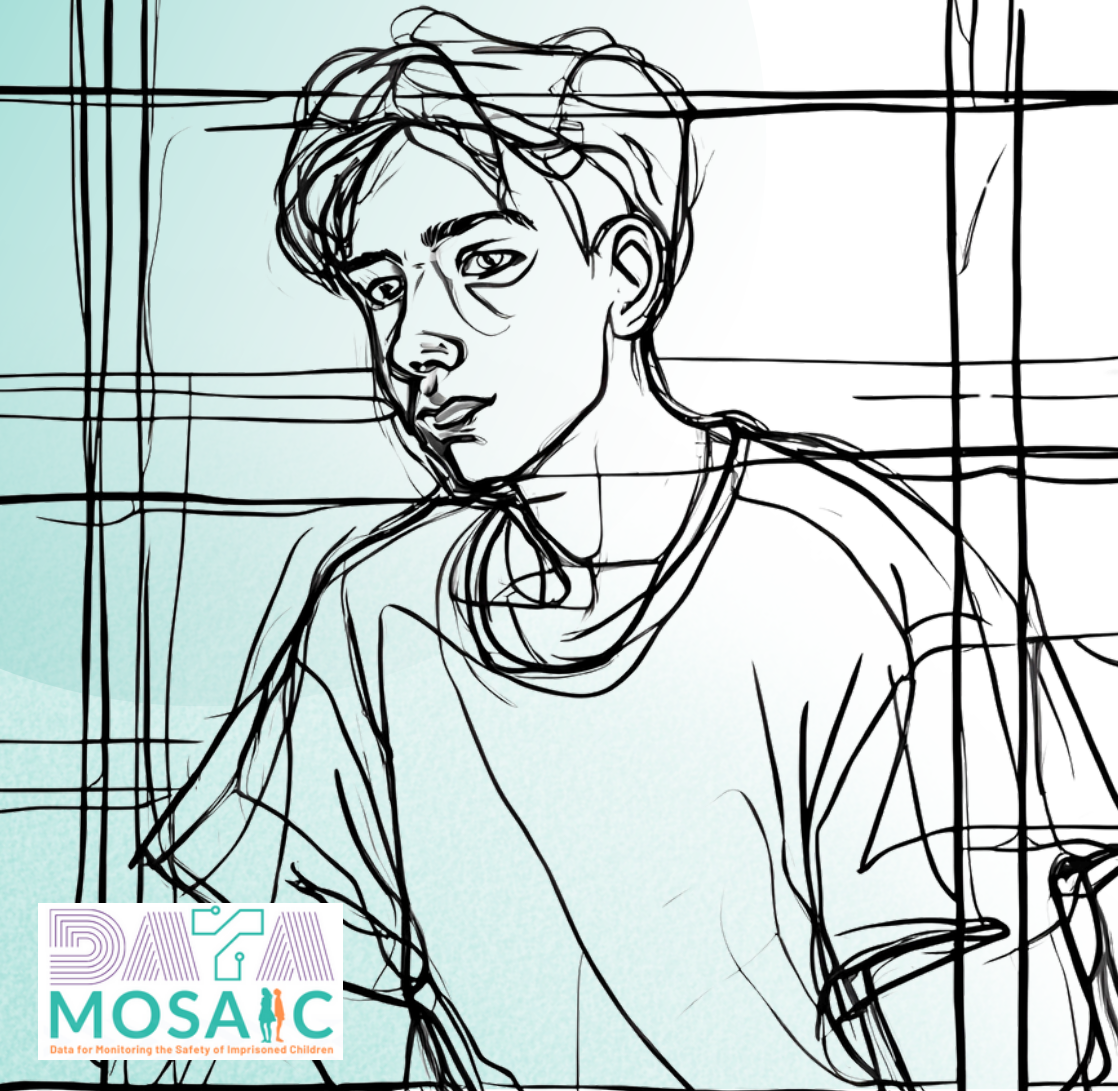


Data for monitoring the safety
of imprisoned children:
A European Study



SCAN ME










 justicewithchildren.org/en/data-mosaic

Penal Reform International

The Hague Humanity Hub
Fluwelen Burgwal 58
2511 CJ Den Haag
The Netherlands
www.penalreform.org

Contact us

 +44 (0) 203 559 6752
 info@penalreform.org
 @PenalReformInt
 Penal Reform International
 penalreformint



Funded by
the European Union

